

HCD-SHAKE99/HCDSHAKE100

Ver. 1.5

SECTION 7 EXPLODED VIEWS

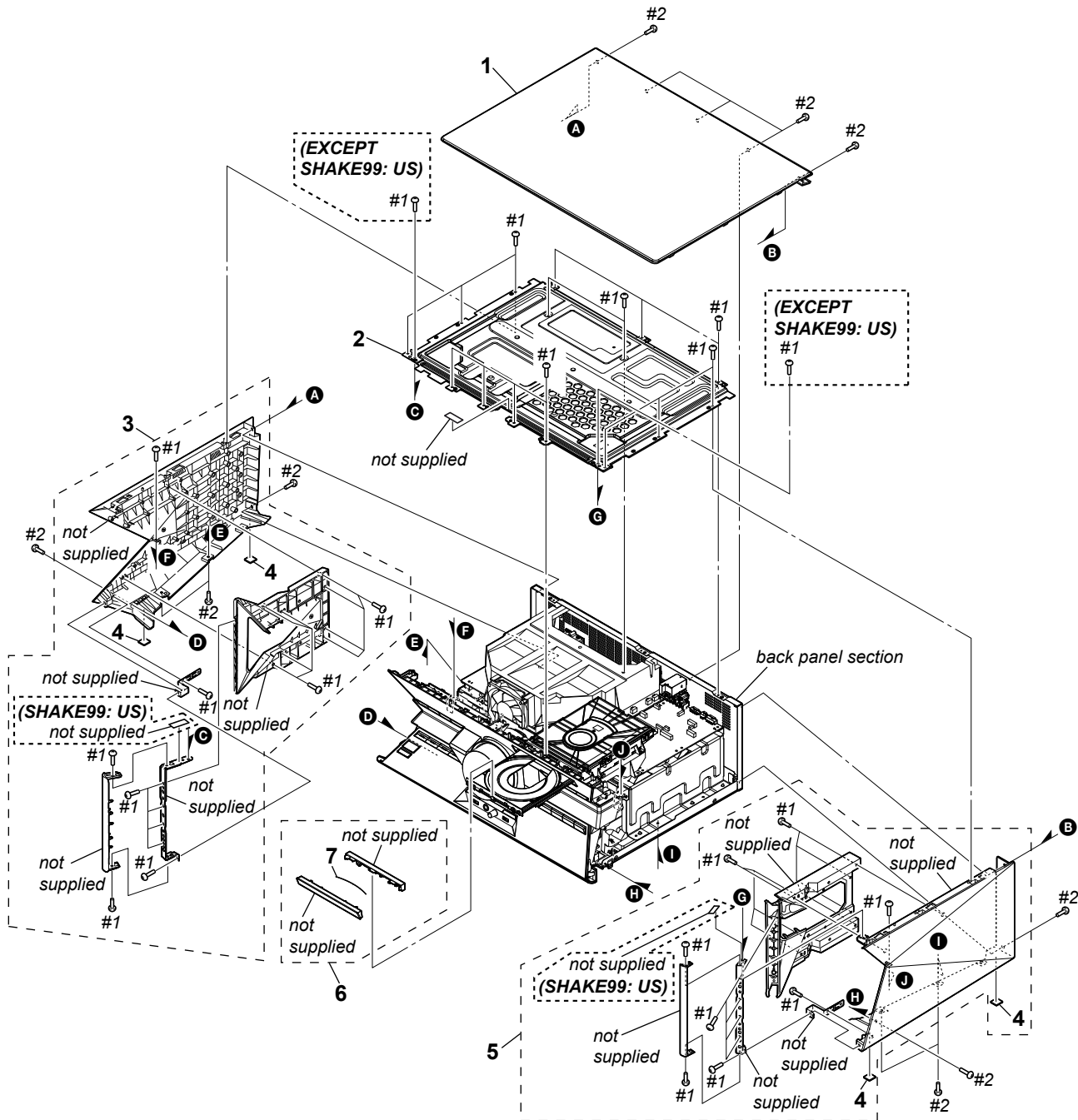
Note:

- The mechanical parts with no reference number in the exploded views are not supplied.
- Items marked "*" are not stocked since they are seldom required for routine service. Some delay should be anticipated when ordering these items.
- -XX and -X mean standardized parts, so they may have some difference from the original one.
- Accessories are given in the last of this parts list.

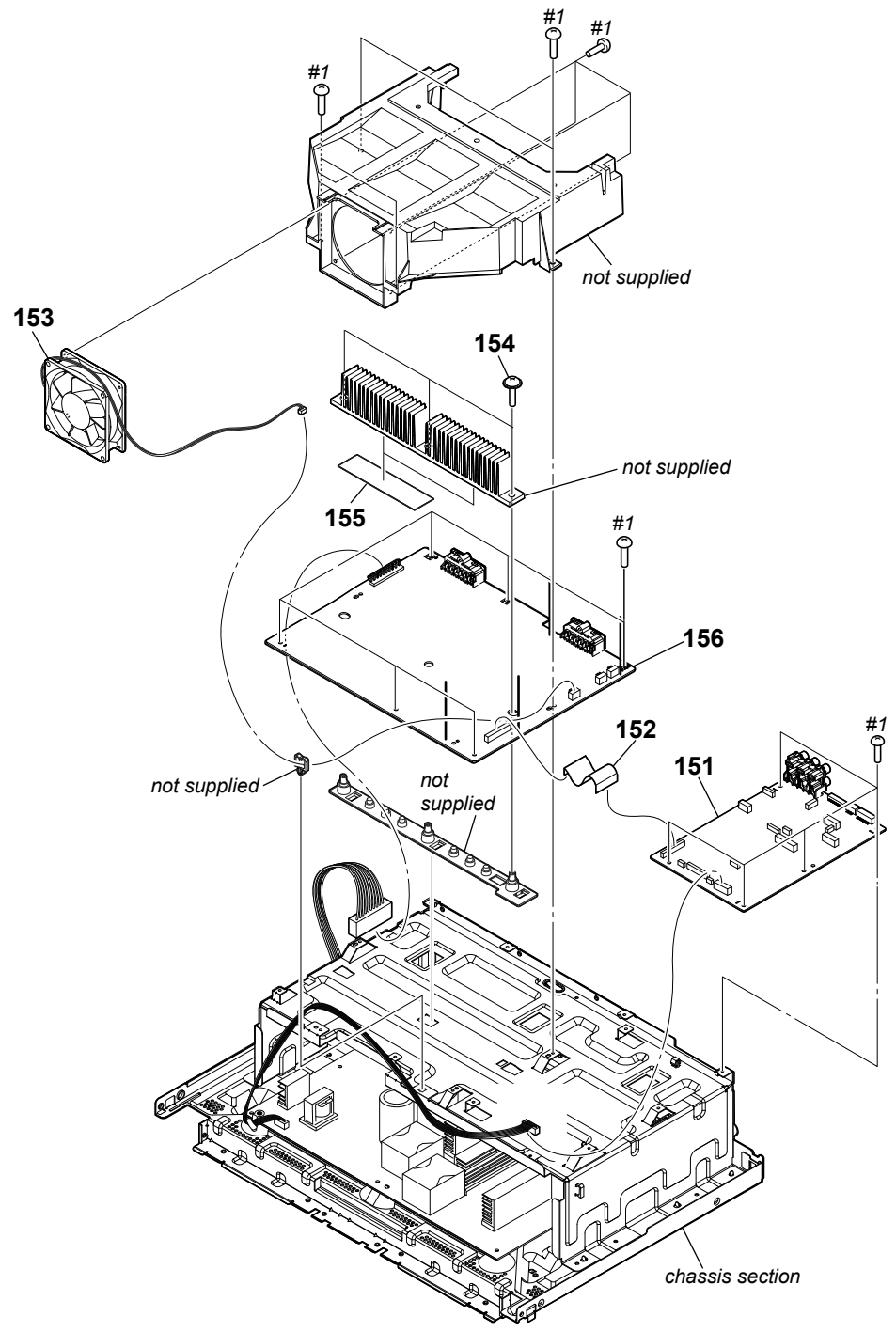
- Abbreviation
- AR : Argentina model
- AUS : Australian model
- E2 : 120 V AC area in E model
- E51 : Chilean and Peruvian models
- EA : Saudi Arabia model
- MX : Mexican model
- MY : Malaysia model
- SAF : South African model

The components identified by mark \triangle or dotted line with mark \triangle are critical for safety. Replace only with part number specified.

7-1. SIDE PANEL SECTION



7-4. MOTHERBOARD BOARD SECTION

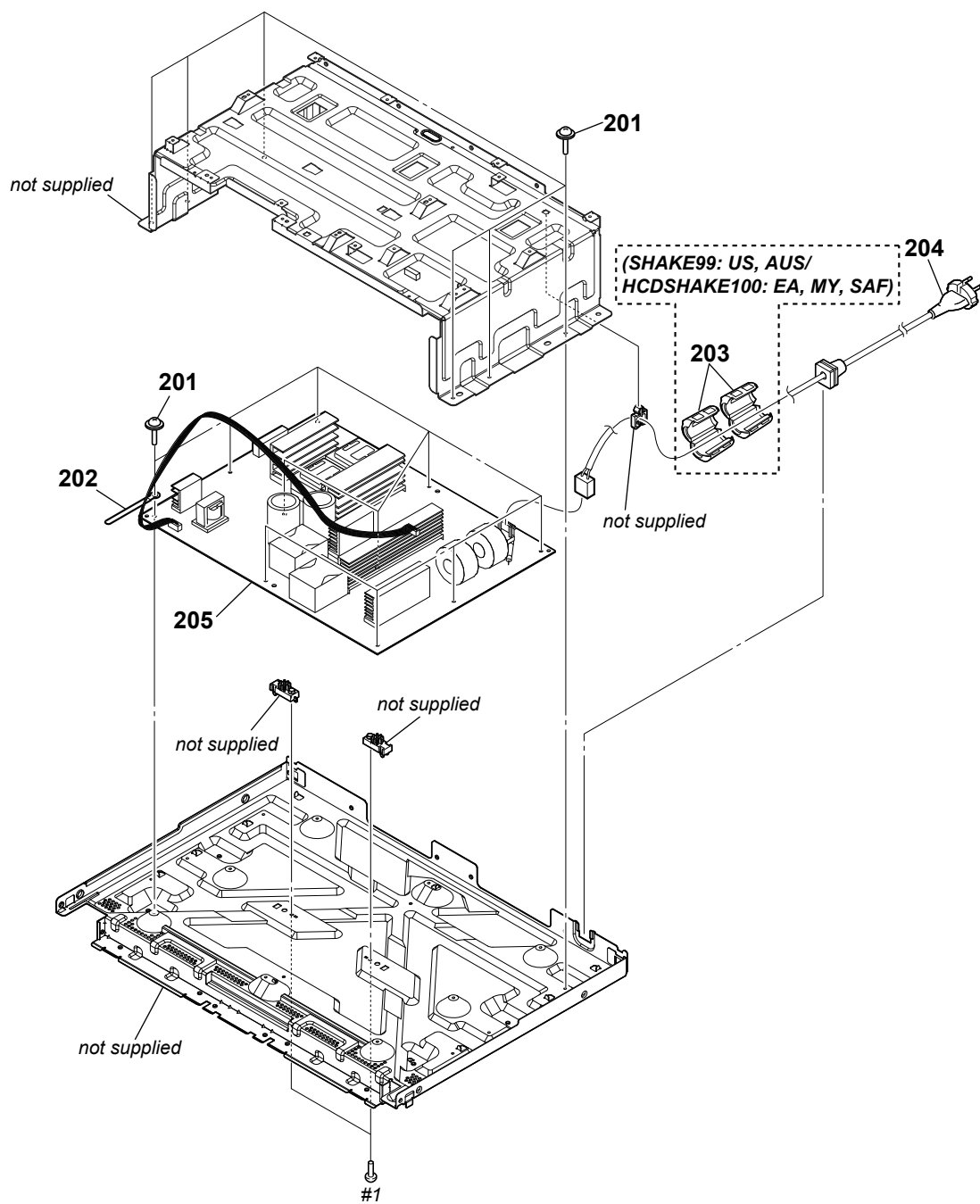


Note: If wire (flat type) is replaced, install it after bending it in the same form as that before replacement.

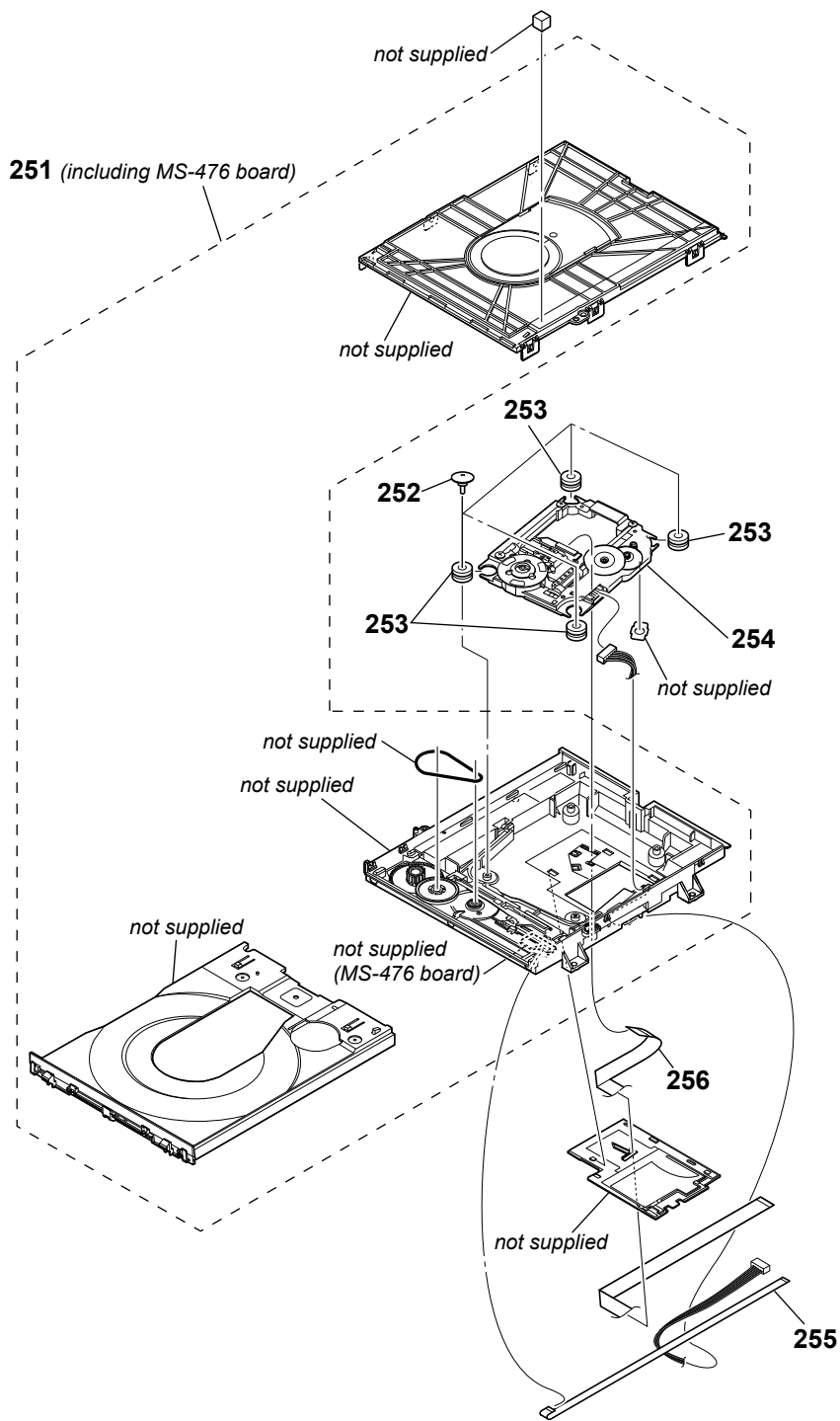
HCD-SHAKE99/HCDSHAKE100

Ver. 1.5

7-5. CHASSIS SECTION



7-6. CD MECHANISM SECTION
(CDM90-DVBU202//M)



Note: If flexible flat cable and wires (flat type) is replaced, install it after bending it in the same form as that before replacement.